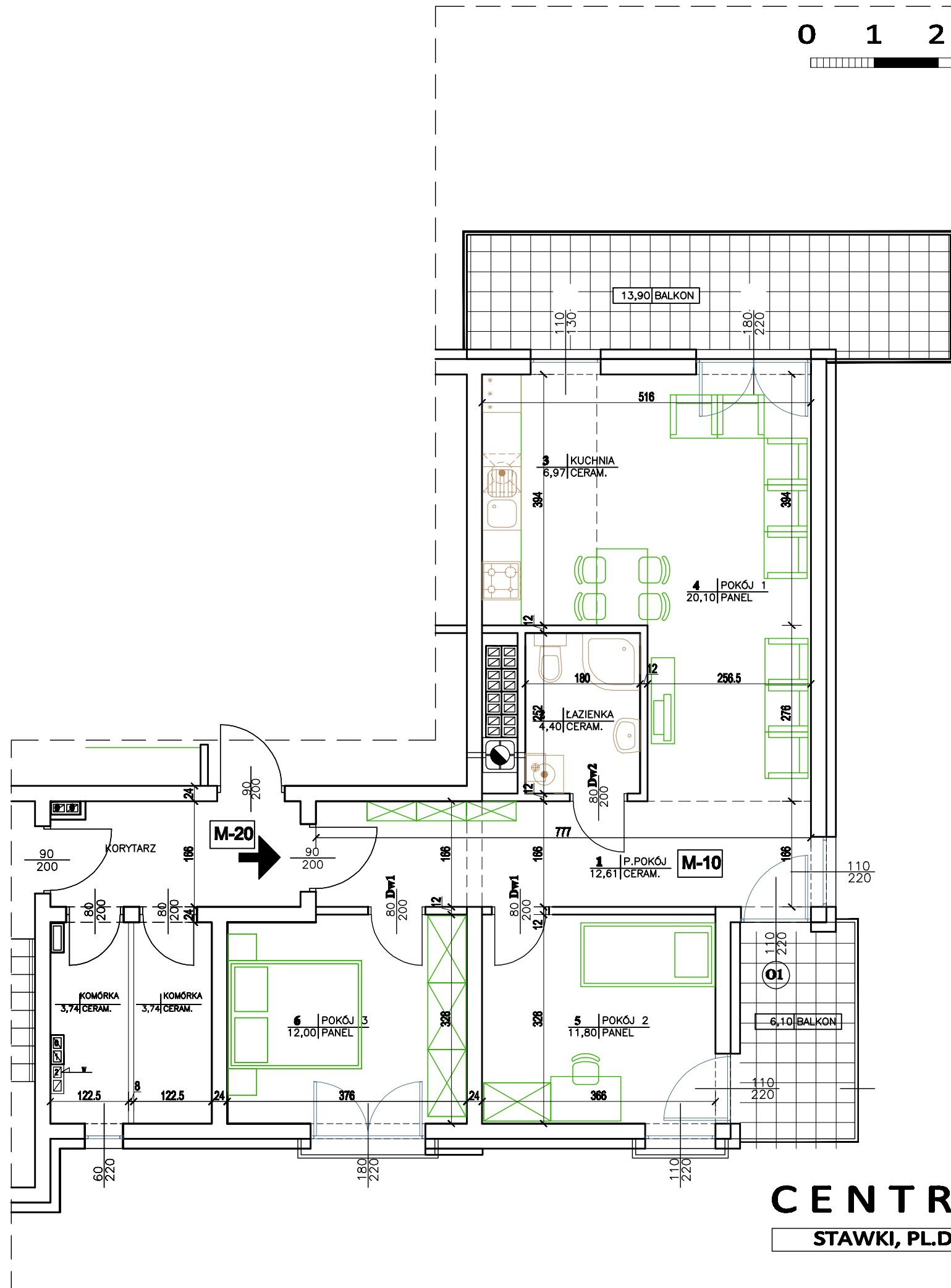
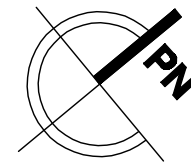


0 1 2 3 4 5m



CENTRAL PARK

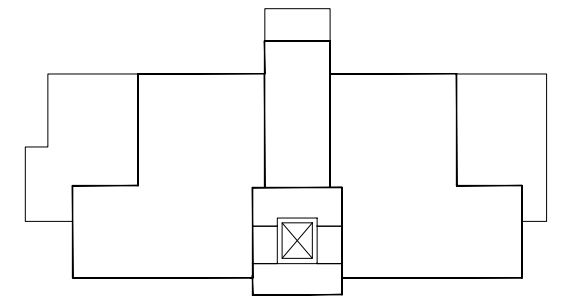
STAWKI, PL.DRZYMAŁY - SWIDNICA

3 PIĘTRO

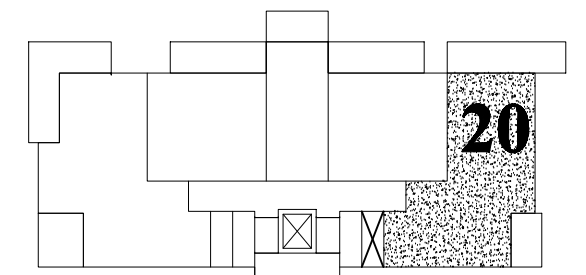
MIESZKANIE NR 20

POW. UŻYTK. 67,88m²

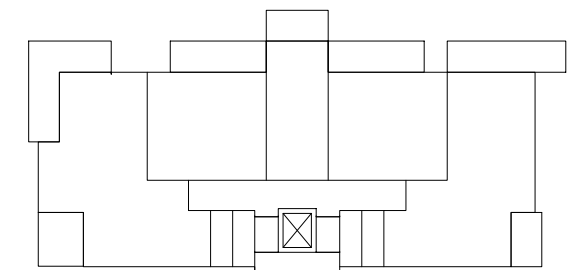
POW. BALKONU 13,90; 6,10m²



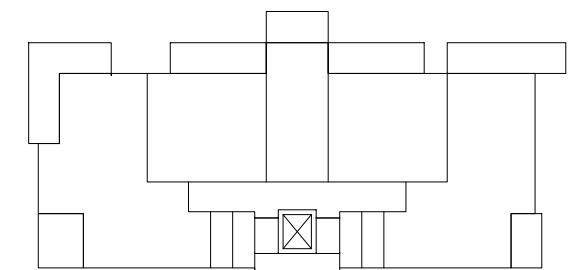
SCHEMAT - 4 PIĘTRO



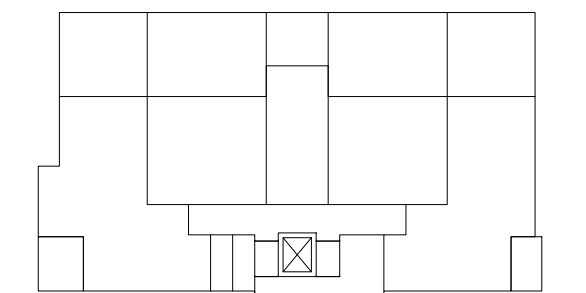
SCHEMAT - 3 PIĘTRO



SCHEMAT - 2 PIĘTRO



SCHEMAT - 1 PIĘTRO



SCHEMAT - PARTER