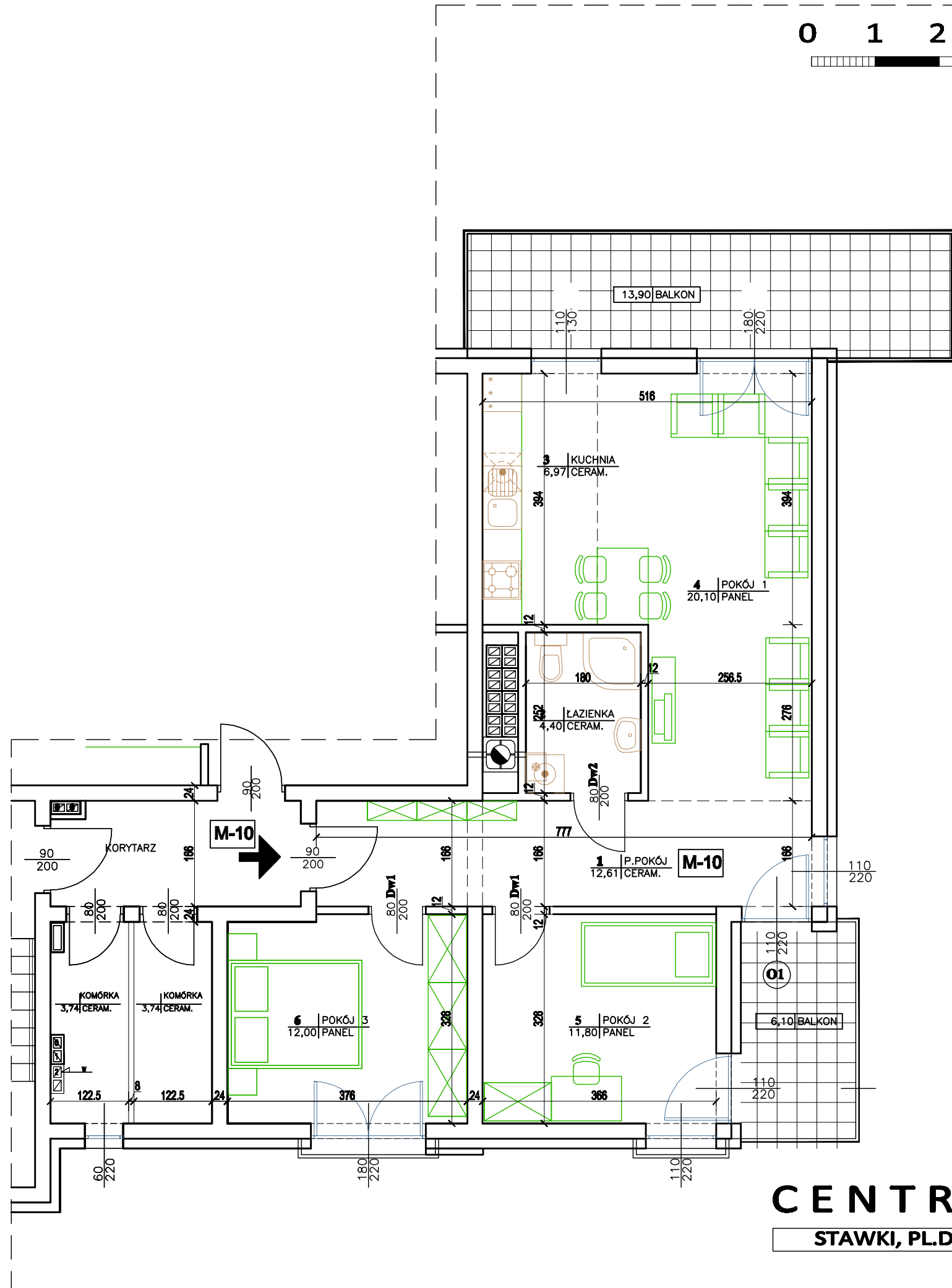
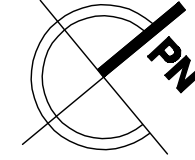


0 1 2 3 4 5m



CENTRAL PARK

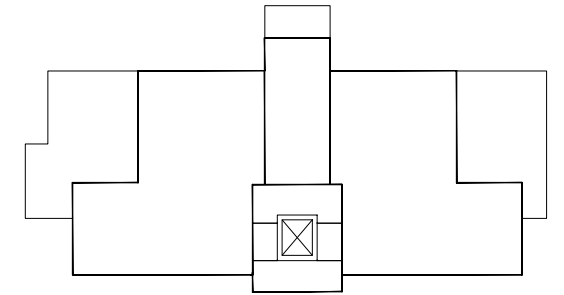
STAWKI, PL.DRZYMAŁY - SWIDNICA

1 PIĘTRO

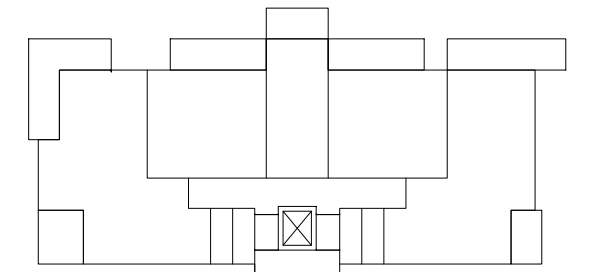
MIESZKANIE NR 10

POW. UZYTK. 67,88m²

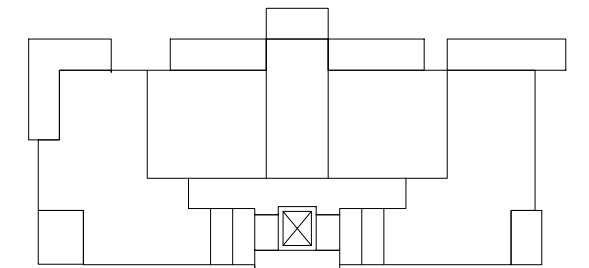
POW. BALKONU 13,90; 6,10m²



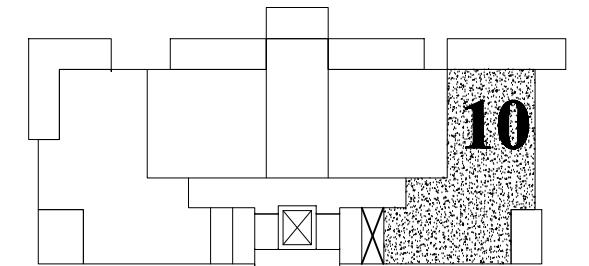
SCHEMAT - 4 PIETRO



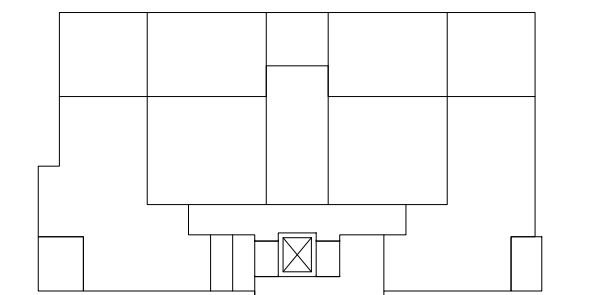
SCHEMAT - 3 PIETRO



SCHEMAT - 2 PIETRO



SCHEMAT - 1 PIETRO



SCHEMAT - PARTER