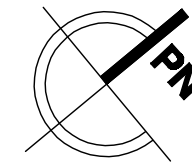
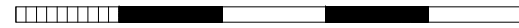


0 1 2 3 4 5m

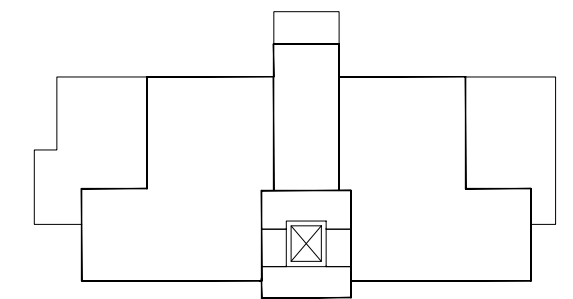


1 PIĘTRO

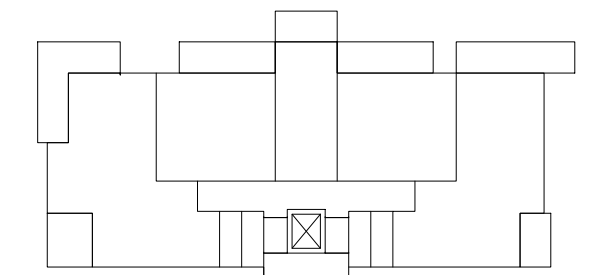
MIESZKANIE NR 09

POW. UŻYTK. 42,92m<sup>2</sup>

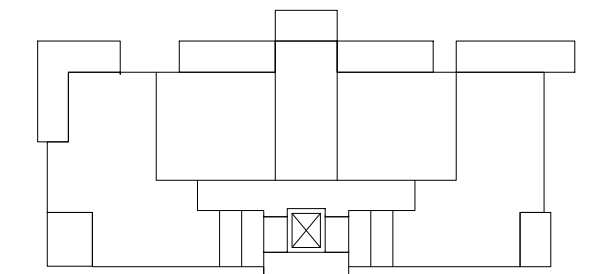
POW. BALKONU 10,20m<sup>2</sup>



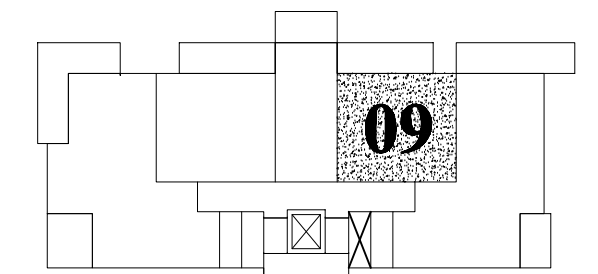
SCHEMAT - 4 PIĘTRO



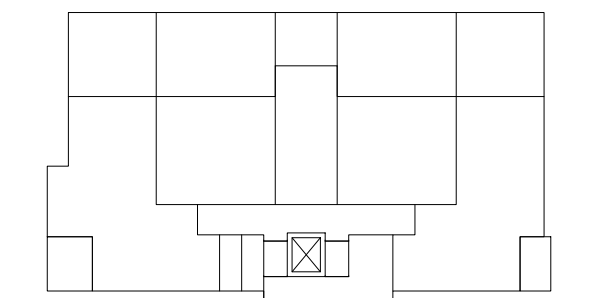
SCHEMAT - 3 PIĘTRO



SCHEMAT - 2 PIĘTRO



SCHEMAT - 1 PIĘTRO



SCHEMAT - PARTER

**CENTRAL PARK**

STAWKI, PL.DRZYMAŁY - SWIDNICA